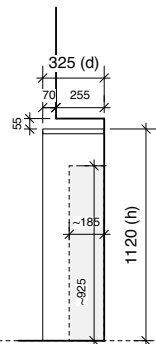
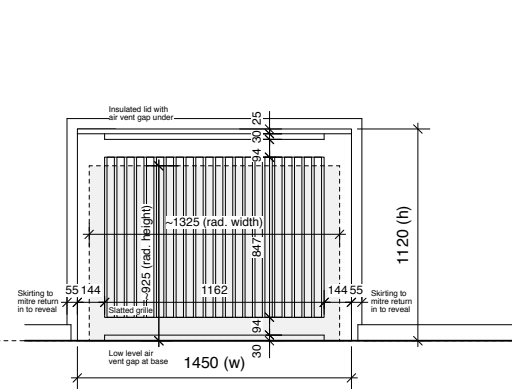


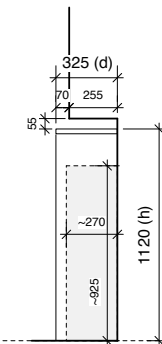
Front Elevation
(view from North Aisle)



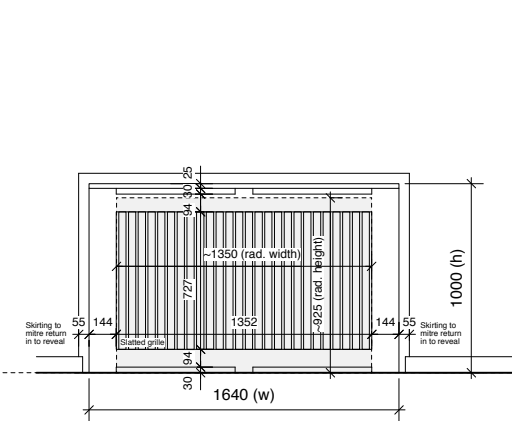
Typical Section



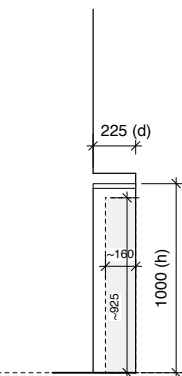
Front Elevation
(view from North Aisle)



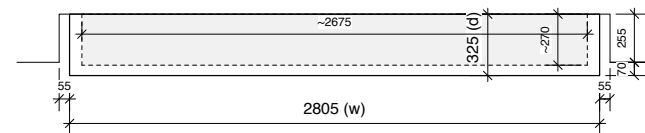
Typical Section



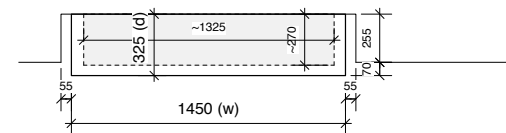
Front Elevation
(view from North Aisle)



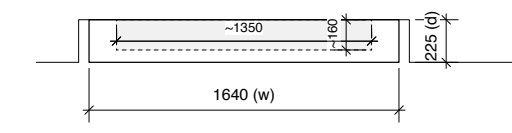
Typical Section



Plan
(view of radiator top)



Plan
(view of radiator top)



Plan
(view of radiator top)

Component C(56).04

Radiators: R6

- Fixed back to wall (within recess) in accordance with the manufacturer's requirements.

Component C(56).05

Radiators: R7

- Fixed back to wall (within recess) in accordance with the manufacturer's requirements.

Component C(56).06

Radiators: R8 & R9

- Fixed back to wall (within recess) in accordance with the manufacturer's requirements.

KEY.

--- Hatched area indicates extent of existing, retained radiator, inclusive of valves, supports etc.

NOTES.

1. This drawing is to be read in conjunction with the Radiator Schedule 440.SC.01
2. Dimensions shown are indicative of design intent and are for budget pricing purposes. Prior to manufacture a detailed site survey of each condition will be required to confirm exact dimensional requirements.

Revisions C0 - 27.04.12 - Issued for Construction

Title Sacred Heart Catholic Church, Quex Road, London NW6
COMPONENTS: Radiator Covers

Brady Mallalieu Architects
90 Queens Drive, London N4 2HW

Scale 1:20/A1
1:40/A3
Date November 11

Drawing No. **440.C(56).04-06** rev. C0

T +44 (0)20 8880 1544
F +44 (0)20 8880 2667
bma@bradymallalieu.com

All dimensions to be checked on site. Do not scale off this drawing. This drawing is copyright.